

가

1970

1000

가

1981

100


, 1987

7

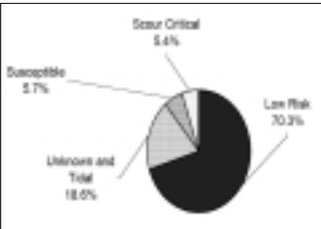
255

가

2003



1. Schoharie creek



2.

1950

, 1980

Schoharie

(1)

가

HEC(Hydraulic Engineering Circular)-18, HEC-20, HEC-23

1988

가

. 2002

(State DOT)

480,000

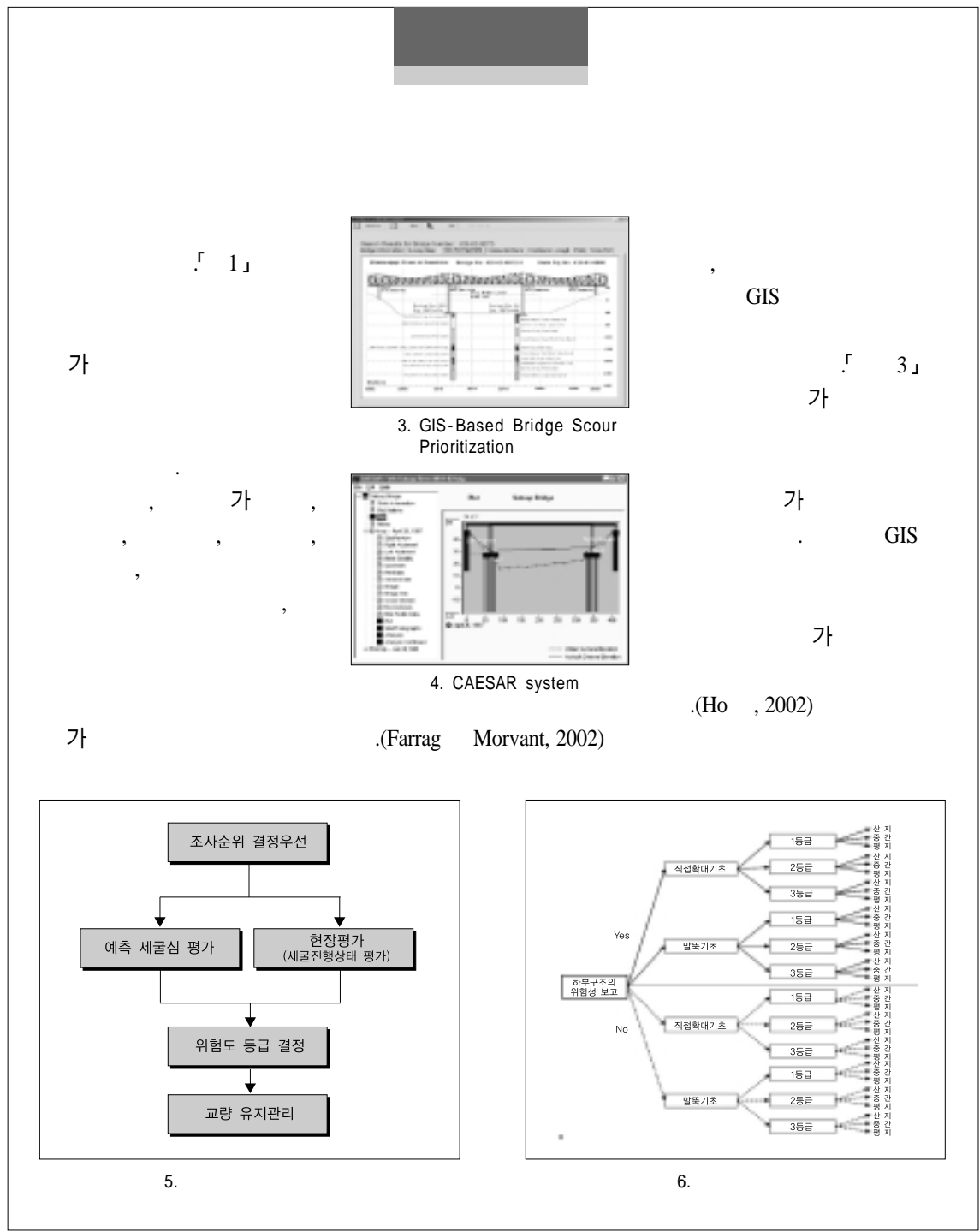
390,000

가가

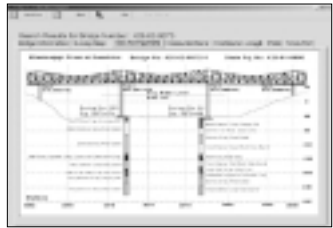
(2),

1.

GIS-Based Bridge Scour Prioritization	
CAESAR(An Expert System for Cataloging and Expert Evaluation of Scour Risk at Bridge Sites)	



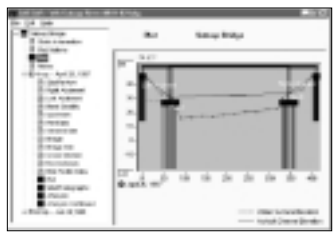
「 1 」



3. GIS-Based Bridge Scour Prioritization

GIS

「 3 」

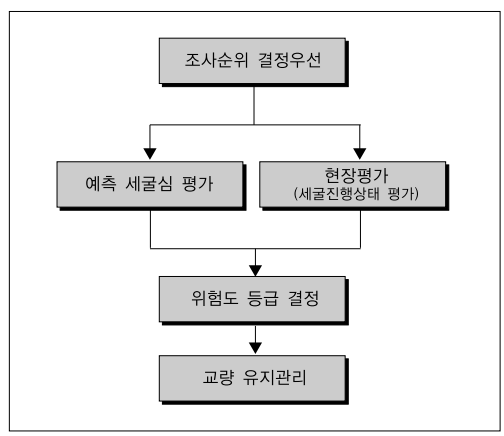


4. CAESAR system

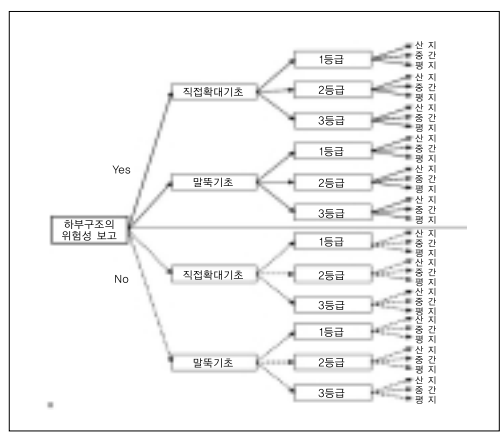
GIS

(Ho , 2002)

(Farrag Morvant, 2002)



5.



6.

