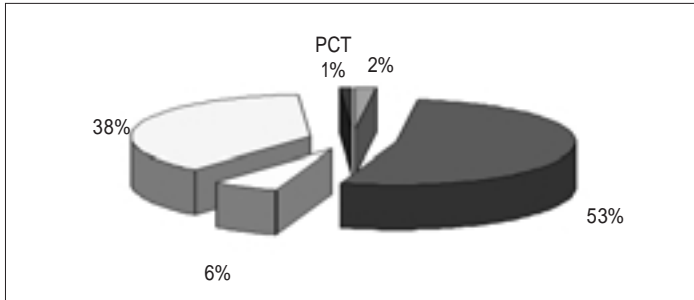




(Telematics)
(Telecommunication)
(Information)

,



1.

)PCT(Patent Cooperation Treaty):

5

, , , 1990

,

가

가

, ,

(ITS)

1997

가

가

1998

가

(2).

(

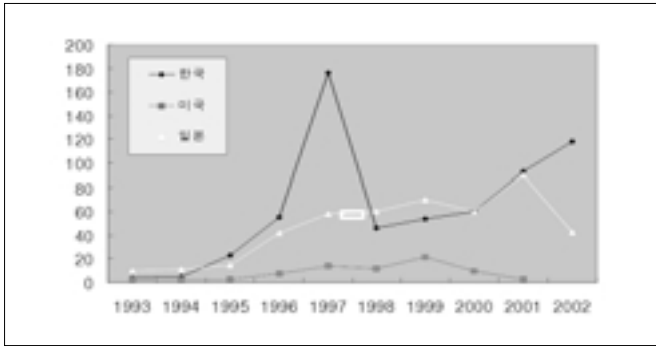
, 1).

가

2004

10

48.9%



RUSLE2

2.

가

5

USLE (Universal Soil Loss Equation)

가

가

(KT),

(SK Telecom),

30%,

5%

USLE 1940 Zingg

가

가

16%

DENSO,

가

Musgrav

FUJITSU, MITSUBISHI, HITACHI,

(1947) 2

30

TOSHIBA

Zingg

(1940)

, 1958 Wischmeier

USDA Agricultural Handbook

282 USLE

ITFIND

1196, 2005. 5.

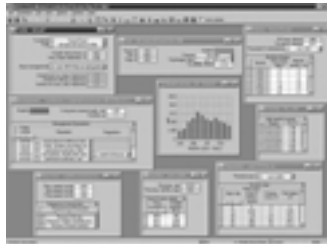
plus@kict.re.kr

), c_i -
 p_i
 $A = \left(\sum_{i=1}^m a_i \right) / m$ (m :)

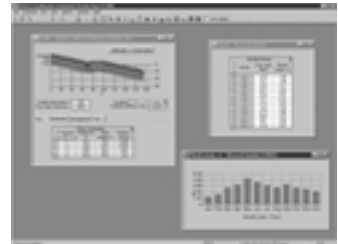
3. RUSLE2

RUSLE2

가



RUSLE2



가

4.

RUSLE2
 USLE


가

RUSLE

GUI

. RUSLE2

가 가



가


: Revised Universal Soil Loss Equation (Version 2): User's Guide, 2003, USDA-Agricultural Research Service, Washington, D.C.

, USLE RUSLE

: ()

cgkim@kict.re.kr

GUI

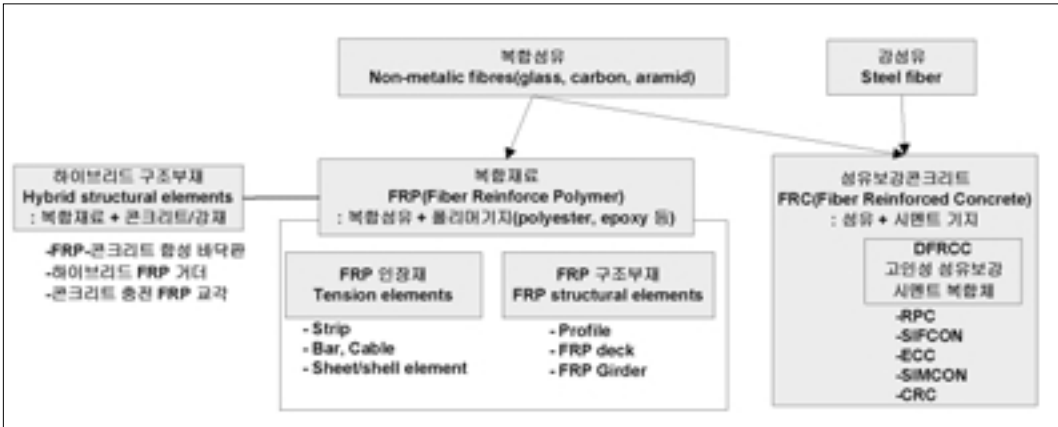


(rebar) FRP

가

(FRP, Fibre Reinforced Polymer) FRP FRP

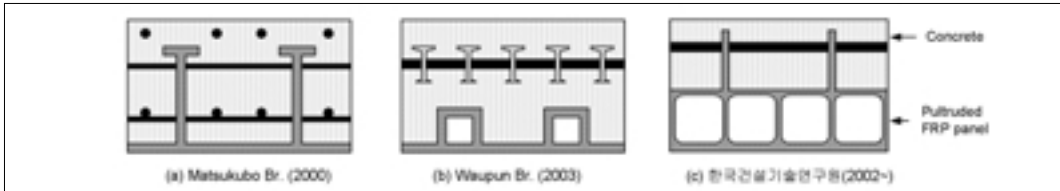
, RUSLE2 (matrix) (1). FRP



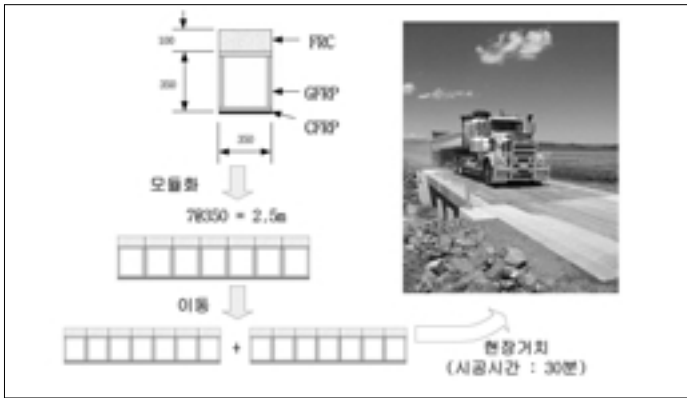
```

graph TD
    A[복합섬유  
Non-metallic fibres(glass, carbon, aramid)] --> B[복합재료  
FRP(Fiber Reinforce Polymer)  
: 복합섬유 + 폴리머기질(polyester, epoxy 등)]
    A --> C[강섬유  
Steel fiber]
    B --> D[하이브리드 구조부재  
Hybrid structural elements  
: 복합재료 + 콘크리트/강재]
    B --> E[FRP 인장재  
Tension elements]
    B --> F[FRP 구조부재  
FRP structural elements]
    C --> G[섬유보강콘크리트  
FRC(Fiber Reinforced Concrete)  
: 섬유 + 시멘트 기질]
    G --> H[DPRCC  
고강성 섬유보강  
시멘트 복합재]
    H --> I[-RPC]
    H --> J[-SIFCON]
    H --> K[-ECC]
    H --> L[-SIMCON]
    H --> M[-CRC]
    
```

1.



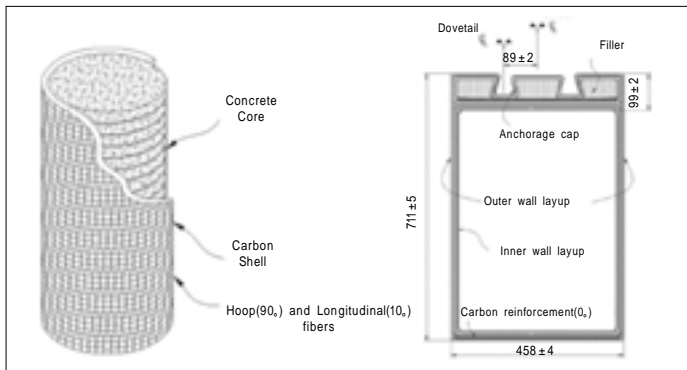
2. FRP



3.

Mastukubo
(Waupun)
가 . . . ,
 . . . ,
 . . . (. . .)
3).
University of California,
San Diego . . .
FRP

FRP . . . FRP . . . 가
FRP . . . CSS
(Carbon Shell System) HTS
(Hybrid Tube System),
FRP . . . FRP . . .
CSS
가 . . . ,
1990 . . .
가 . . . 2 . . . HTS CSS 가
 . . . ,
가



4. CSS HTS

5/Gilman Bridge

FRP

(GFRP)

(5). ,
 CSS , HTS 가 ,
 (4). CSS (FRC, Fibre Reinforce Concrete)
 FRP Kings 가
 Stormwater Channel Bridge가 137.2m I-




5. Kings Stormwater Channel Bridge

- : 1. (3), 2004. 12.
- 2. Thomas Keller, Use of Fibre Reinforced Polymers in Bridge Construction, Structural Engineering Documents, IABSE, 2003.

: ()
 chojr@kict.re.kr



(weBLOG) (weB) 가 8
 (LOG) (Blogger) 가
 (Bloging) .
 , 1996 ,
 가 , , HTML 가 IT
 , , , HTML 가 IT
 가
 가
 IT
 XML(eX-
 tensible Markup Language)



1. SharpReader

가
가 RSS
(Really Simple Syndication)
(Track Back)
. RSS

XML
. RSS
, ,
가

RSS
peer-to-peer
(<http://blog.www.com.ne.kr/v2/>)
REST(Representational State Transfer)
(<http://www.sharpreader.net/>)
가 (pull)
(push)
2

1). A가
B, C, D, E

2002 8
XML A B, C, D, E
(Trackback Ping)

가 Movable Type A

2.2

RSS

2.

가 RSS
(Really Simple Syndication)
(Track Back)
. RSS

XML
. RSS
, ,
가

RSS
peer-to-peer
(<http://blog.www.com.ne.kr/v2/>)
REST(Representational State Transfer)
(<http://www.sharpreader.net/>)
가 (pull)
(push)
2

1). A가
B, C, D, E

2002 8
XML A B, C, D, E
(Trackback Ping)

가 Movable Type A

2.2

RSS

